

SYSTEM CONFIGURATION

System must have a minimum of:

RAM: **4GB**

Hard Disk: **500GB**

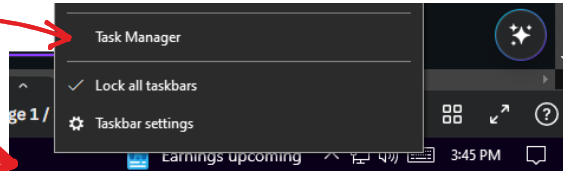
Processor: **Quadco 2.7 GHz**

Operating System: **Windows 10**

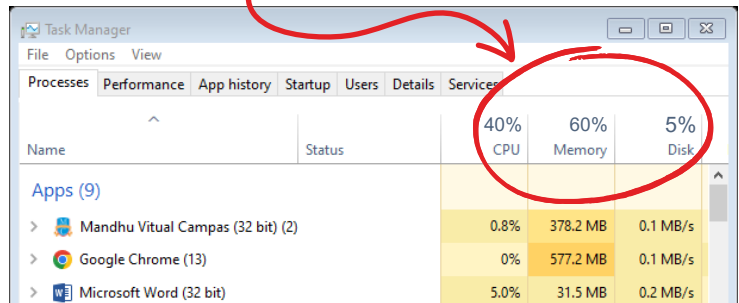
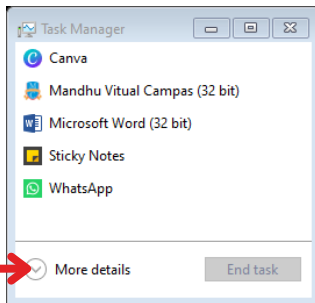


SYSTEM REQUIREMENT FOR VIRTUAL CAMPUS

You can open **Task Manager** by right clicking on an empty space on the **Task bar**



Click on **More details**. With the **above requirements** your system performance should not go above the **percentages** shown below.



CPU

When system is not in use **CPU** varies between **10% - 15%** and when you start using **virtual system, Microsoft office applications and browser** it should be between **20% - 40%**. So it must not go above this range.

Note: If it goes above the mentioned range it means that your system **Desktop or C Drive is getting full**. So you might have to **uninstall some of the applications** and **move the files that you have on the Desktop** to D Drive or to an external device eg. **Pen Drive or Hard Disk**

Memory

The **memory** varies between **20% - 60%** when using **virtual system, Microsoft office applications and browser**. If applications are not open it should be between **15% - 30%**.

Note: If it goes above the mentioned range it means that your system has **too many applications open or too many applications running in the background**. So **close unwanted applications** for your classes and **restart your system**.

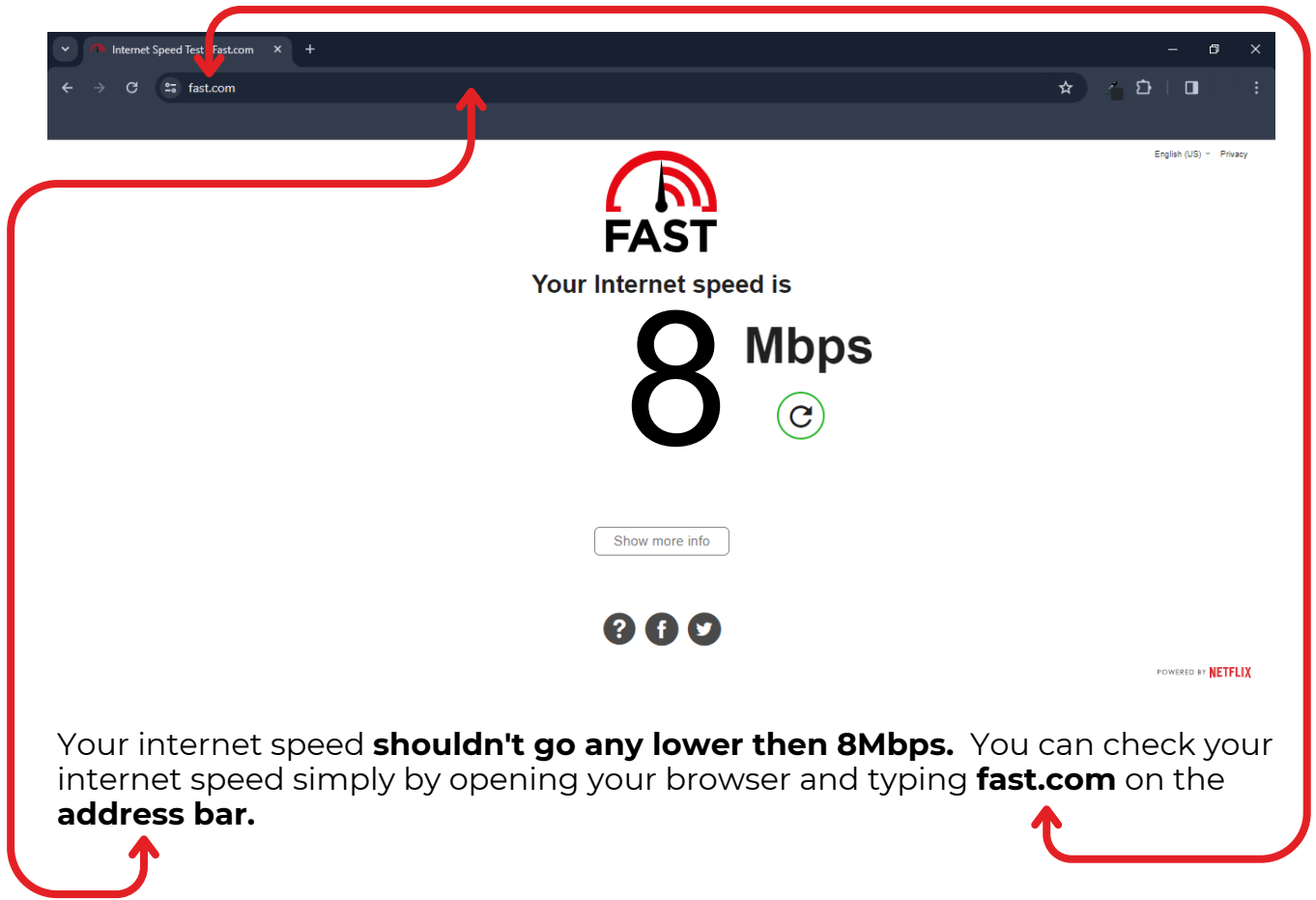
Disk

The **Disk** varies between **0% - 5%** when **applications are open or not**.

Note: If it goes above the mentioned range its because your **system is updating or when you are downloading something large** from the internet or **moving a large file from your external device to your system**.

The system **will start slowing down** if you have been using your system for **more then a year** so remember to get your **system serviced** if this is the case.

INTERNET SPEED



The image shows a browser window with the URL 'fast.com' in the address bar. The website content displays the 'FAST' logo, the text 'Your Internet speed is', and a large '8 Mbps' result. Below the result is a 'Show more info' button and social media icons for help, Facebook, and Twitter. A 'POWERED BY NETFLIX' logo is visible in the bottom right corner of the website. Red arrows originate from the text below and point to the browser address bar and the '8 Mbps' result.

Your internet speed **shouldn't go any lower than 8Mbps**. You can check your internet speed simply by opening your browser and typing **fast.com** on the **address bar**.

IMPORTANT NOTICE

- If any of the stated issues are there you **will face Disconnections, Freezing, Software not responding, etc.**
- If it's a Software or a Hardware issue you can **contact us: 9720055** or **take your system to the nearest service center.**
- If its an Internet issue **contact your Internet Service Provider.**

So with the above information you, **yourself can check your Virtual System status.**